

CHAS² Status Monitoring Options



There are two main options to monitor the CHAS² Headend Amplifier System: Contact Closure and Web Based monitoring.

For those cable operators employing a proprietary monitoring system, the CHAS² is available with a contact closure equipped chassis. The chassis incorporates an alarm interface that provides 8 individual dry contact closure alarms, each related to a specific slot in the chassis. The contact closure is fully isolated, normally open, with a capacity of 1 A @ 30 VDC, 0.5 A @ 250 VAC

All CHAS² modules are equipped with a basic alarm Interconnects indicating presence and functionality:

AC Power Supplies indicate the generation of +24 VDC

DC Power Supplies indicate the generation of +24 VDC

Amplifier modules indicate the presence of RF Output above the preset alarm levels.

CHAS² RF Redundant RF Switch modules indicate the presence of +24VDC and primary switch state.

For Web Based monitoring, each chassis can be equipped with either a Master or Slave card. Each Master Card has a unique MAC address, and Internet interface (WEBSITE) allowing remote monitoring via web browser, allowing the CHAS² to be seamlessly integrated into an overall LAN system.

The Master Card can also connect up to 31 additional CHAS² chassis' equipped with Slave Cards. This allows a total of 32 complete loaded chassis' to be monitored under a single MAC address.

The Module monitors all modules including Amplifiers, Power Supplies and A/B Switches. Monitoring functions include

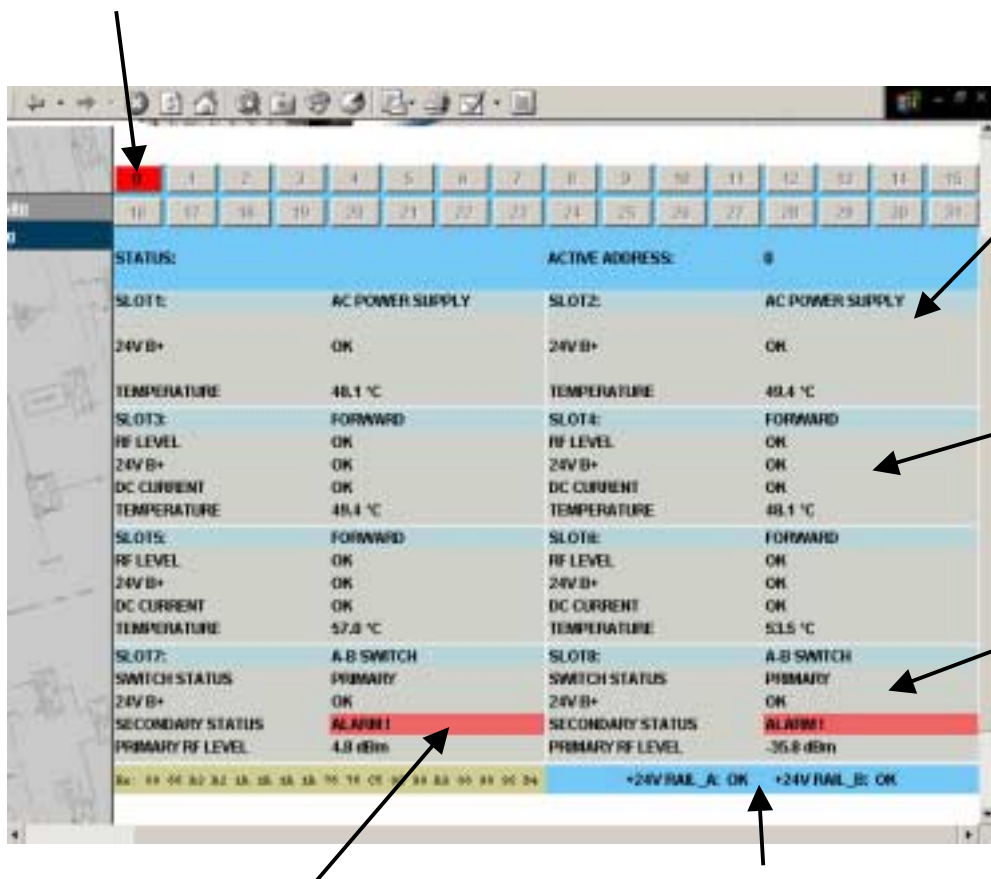
Module Identification

- Temperature
- DC voltage
- DC Current
- RF Level Alarm
- A/B Switch state



SCREEN PRESENTATION

The "0" button is the "Master" chassis, and subsequent numbers are "Slave" Chassis'.
 The screen has 8 boxes corresponding to 8 slots in the CHAS² chassis.



Power Supply equipped slots will show presence of +24VDC and module temperature.

Amplifier equipped slots will show RF Level status, DC Voltage and Current status as well as module temperature.

RF Switch equipped slots will show Switch status, DC and Secondary source status, as well as primary RF power level.

Alarms will be highlighted in Red.

Status of both DC rails is indicated.

PART #	PART DESCRIPTION	MODEL
824-707-602-0CE	CHAS 2 MONITORING CARD SLAVE	CHAS 2 CARD SLV
824-707-601-0CE	CHAS 2 MONITORING CARD MASTER	CHAS 2 CARD MSTR
824-707-801-0CE	CHAS 2 8 MODULE CHASSIS CNTCT CLSR	CHAS 2 CHASSIS CC
824-707-804-0CE	CHAS 2 8 MODULE CHASSIS WEB MONITOR	CHAS 2 CHASSIS WEB



CableServ Inc.
 949 Kamato Rd
 Mississauga, Ontario, Canada L4W 2R5
 Telephone: (905) 629-1111
 Fax: (905) 629-1115
 E-mail to: inquiries@cableserv.com
 Visit us at <http://www.cableserv.com>